

MOBILE STATUARY

ELEMENTS OF A SCULPTURE



THE TRUNK (HEAD / NECK / CHEST / WAIST / PELVIS)

- What is the Emotional State?
- Is the Heart Open or Closed?
- Standing / Sitting / About to Stand / About to Sit?
- Inclined Forward / Back / Both ?
- Inclined Left / Right / Both?
- Are they Supporting their own Weight or Being Supported?
- Is the Pelvis in the same direction as the Chest?
- Is the Waist Forward or Back or Inclined?
- Is the Figure breathing Rapidly or Slowly?



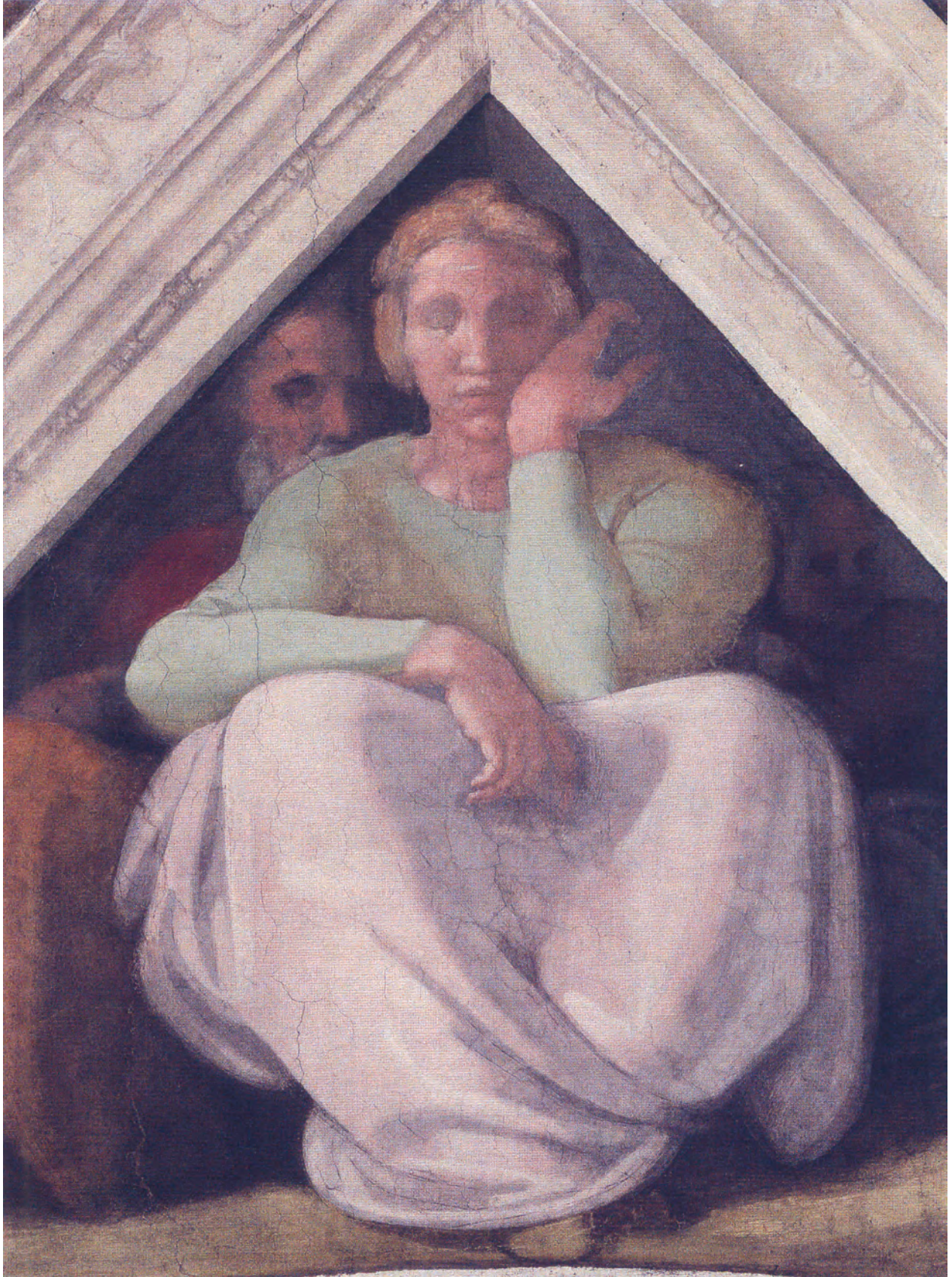
THE FACE

- What is the Emotional State?
- At what is the Figure Looking?
- Are the Head and the Eyes in Unison or Contradictory?
- What is the Mouth doing?
- How High or Low in the Chin?
- Is the Head Inclined and/or Rotated?

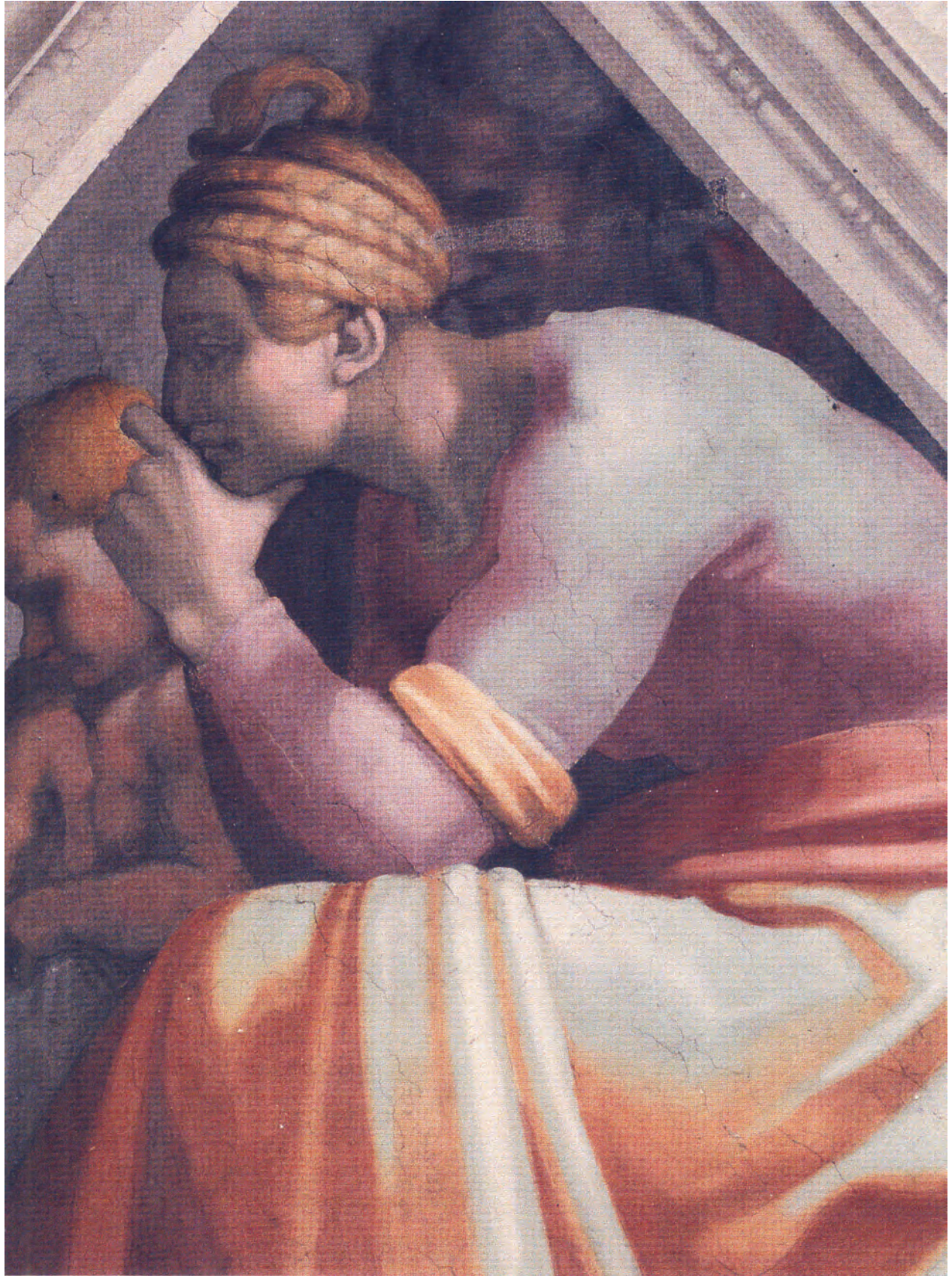


THE ARMS AND LEGS

- Study each Finger and each Toe.
- Are the Arms and/or the Legs Supporting the Trunk?
- Are they Reaching or are they in Repose?
- Are they Expressing the same Emotional State as the Trunk?
- How High or Low are the Elbows?



Severy above the Jesse-David-Solomon lunette



Severy above the Roboam-Abias lunette



Roboam-Abias lunette (detail)



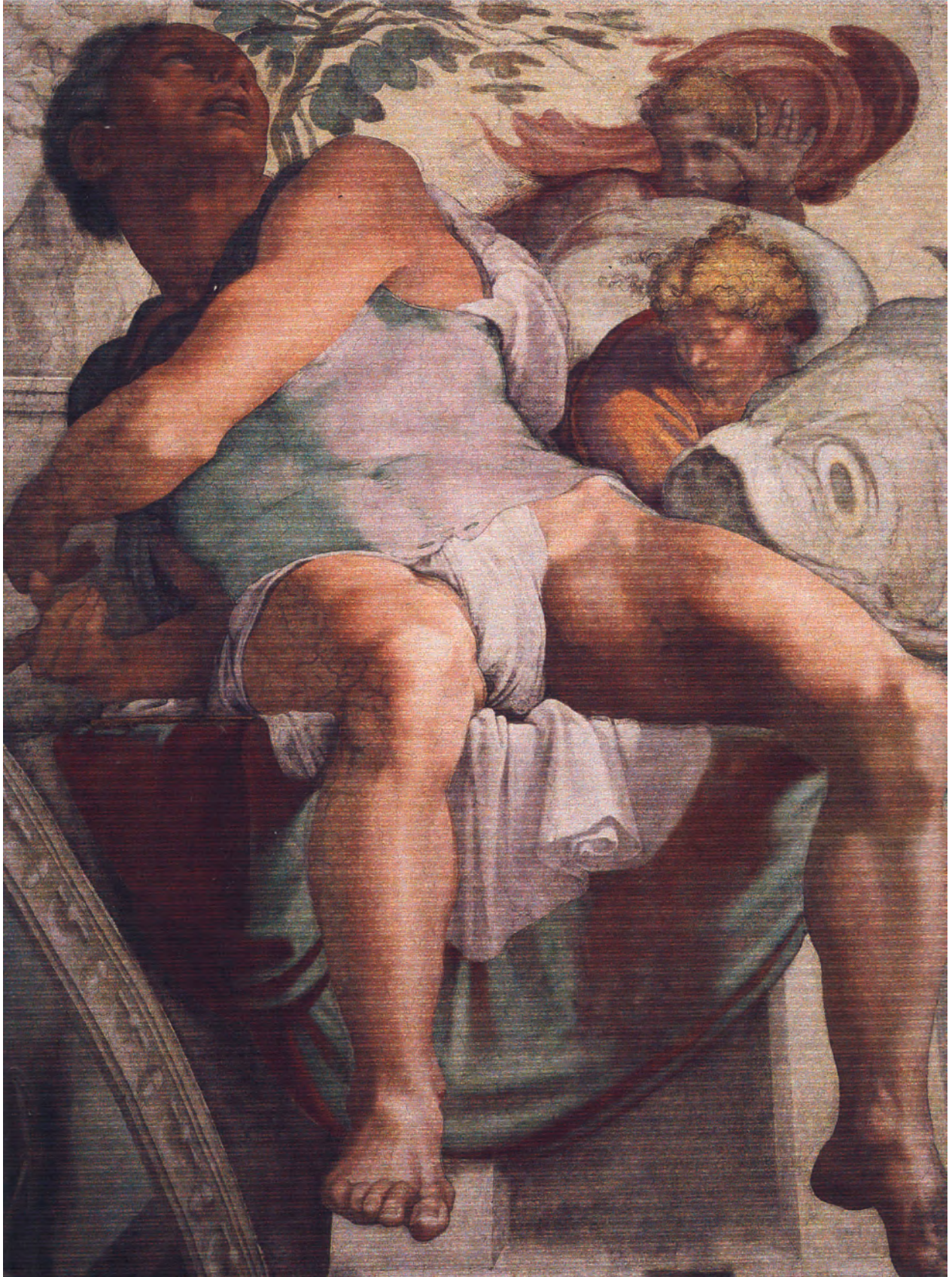
The Delphic Sibyl



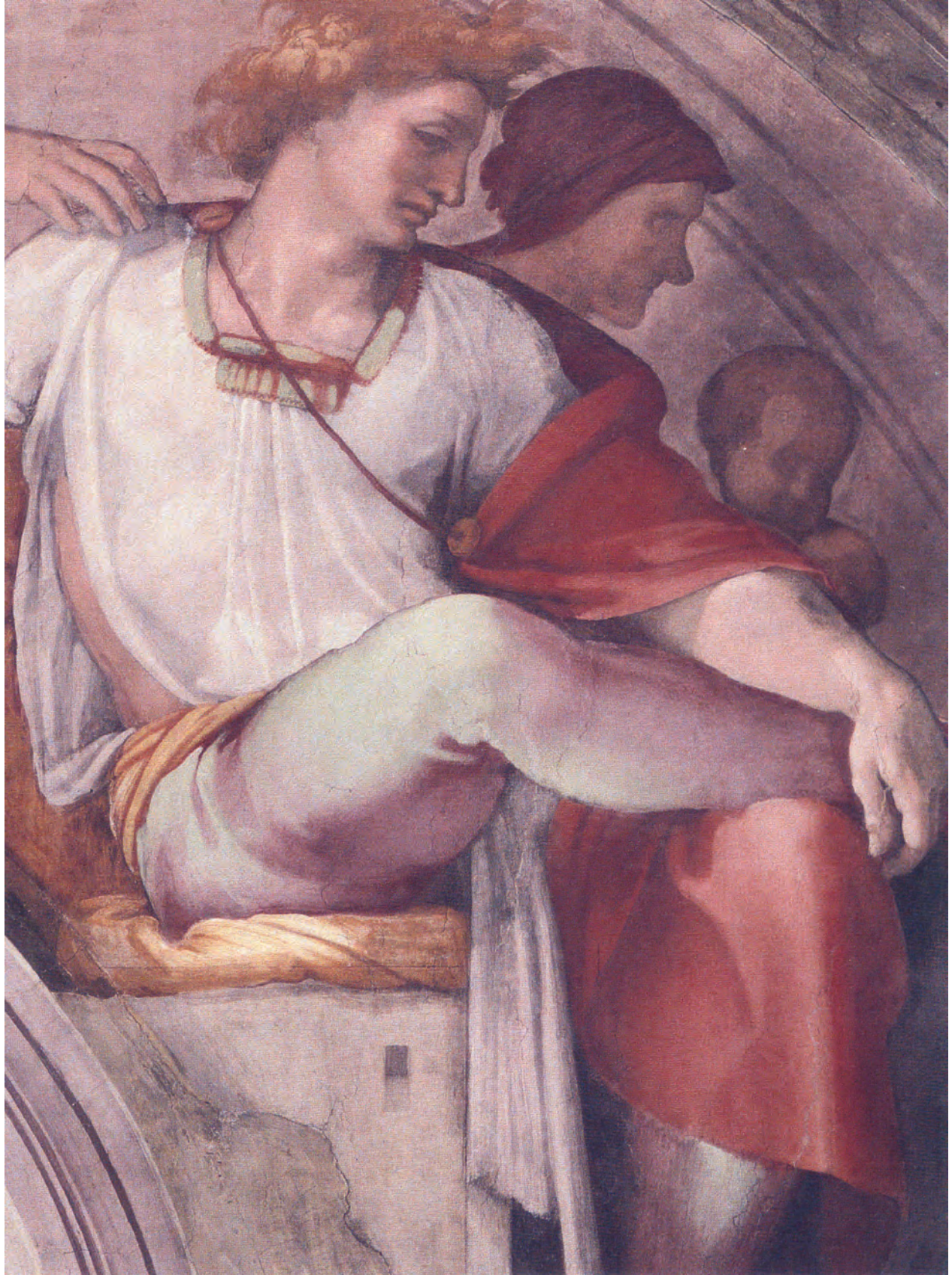
The Prophet Ezekiel



The Prophet Isaiah



The Prophet Jonah



Eleazar-Mathan (detail)